



# The Art of Body Shaping



- Body Shaping
- Fat Layer Reduction
- Selective Fat Cell Destruction



## Shape Your Success with UltraShape Power

### The Most Comfortable and Painless Fat Reduction Treatment

UltraShape Power is a complete solution for non-invasive body shaping. Clinically proven in more than 350,000 treatments worldwide, it delivers unsurpassed fat destruction results – quickly, safely and comfortably. With no thermal effect, treatments are painless, surrounding tissue, nerves and blood vessels are unharmed, and there are no visible signs of treatment.

### Customizable Treatments

Treatments can be customized for each patient, with no applicator-imposed restrictions on treatment size or body shape.

### Visible and Fast Results

UltraShape Power typically produces measurable fat layer and circumference reduction results – much sooner than thermal-based treatments after just 3 sessions. Your patients can quickly see and feel the difference.

### Superior ROI for Your Practice

With increased power and Fly Mode, which reduces session time, UltraShape Power delivers impressive patient outcomes and enhances the user experience. It delivers a superior return on investment compared with other non-invasive fat destruction methodologies, as it covers a larger area in less time.<sup>1</sup> Additionally, as UltraShape Power is also effective on patients with BMI >28, it offers a non-invasive alternative to liposuction, opening opportunities for new revenues.

UltraShape Power is CE-approved for non-invasive mechanical fat cell destruction and body contouring.

<sup>1</sup> Data on file: Syneron–Candela ROI comparison.

UltraShape body shaping works! It is a safe, effective treatment to remove stubborn areas of fat. Typically, 3 treatments, 2-3 weeks apart, result in a 2-5 cm reduction in fat. Results are seen more quickly than with other fat reducing devices on the market and it is a more comfortable treatment. Patients have been extremely happy with their results.

Martie Gidon, MD, Dermatologist, Toronto, Canada

## Access the Fastest-growing Market Segment

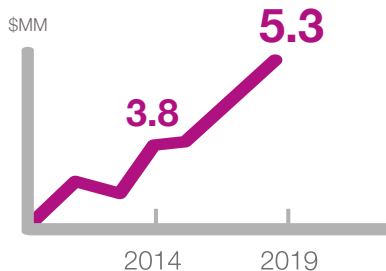
### Global Body Shaping and Skin Tightening Market<sup>2</sup>

Fastest-growing segment by volume



expected in 2019

**40%** growth in physicians' treatment revenues by 2019



**Largest segment** by investments, and set to double

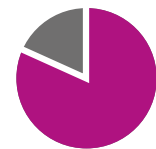
**X2**  
by 2019

### Addressing Patients' Needs<sup>3</sup>

**80%** of women say they are **overweight**



**72%** of women are **not satisfied** with their bellies



**1 in 3** women have considered more than diet and exercise to lose fat



**52%** of women would consider a non-invasive procedure to reduce belly fat



<sup>2</sup> Professional, non-invasive, energy-based. Source: Medical Insight Inc., 2015  
<sup>3</sup> Source: Syneron proprietary consumer survey 2012 and 2015

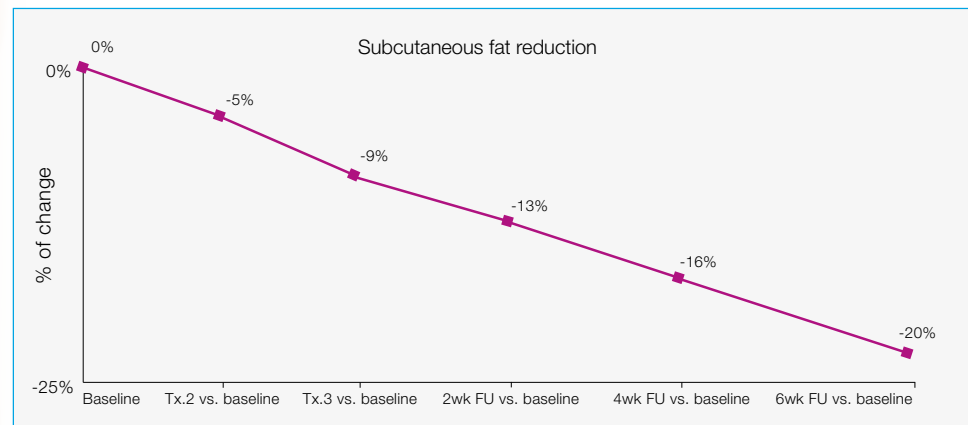
# POWER-UP Your Fat Destruction Results

## POWER-UP Efficacy

Make a visible difference with increased efficacy and consistency of fat layer reduction.

Clinical outcomes:<sup>4</sup>

- Significant reduction in subcutaneous fat layer – 20% average fat layer reduction.



- Noticeable circumference reduction – 3.15 cm average reduction.
- High response rate – 83% of patients achieved at least 1.5 cm circumference reduction.
- Effective combination therapy – Combining UltraShape with VelaShape III treatments further reduces circumference and improves skin tightening results.

Patient satisfaction:

100%

of patients reported they felt comfortable during treatment in a clinical study



83%

of clinical study patients reported an improvement after the first session



The most painless treatment – Average reported pain level of 0.7 on a scale of 0-10



No downtime or visible signs of treatment, unlike other fat destruction methods

350,000 treatments worldwide



Customizable for each patient – The only fat destruction procedure that can be adjusted to individual body areas and shape, including BMI >28

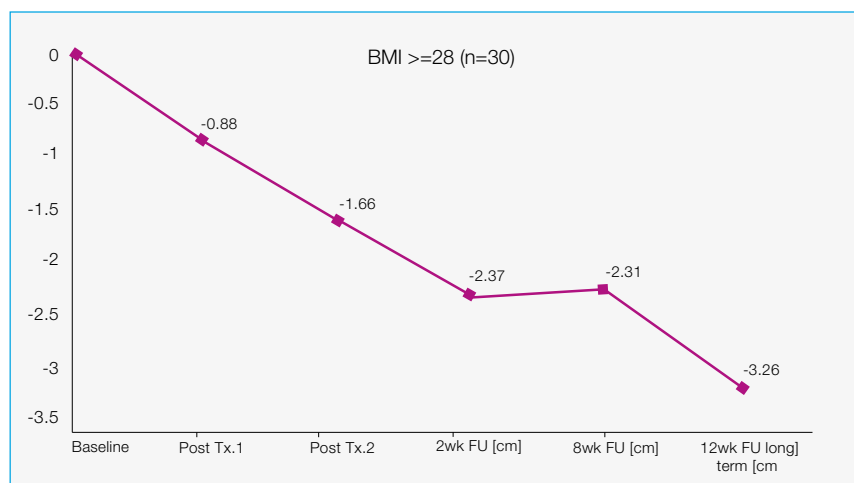


<sup>4</sup> Data on file: Syneron-Candela, UltraShape 12gr. Clinical Study.

## POWER-UP Earnings

Grow your business with shorter treatment times and higher return on investment (ROI) compared to other leading solutions.

- **Faster treatments** – NEW optional **Fly Mode** minimizes treatment time, shortening sessions.
- **Financial benefit** – Profit per patient is higher than other non-invasive fat destruction methods, leading to significantly higher yearly net profits.
- **Faster return on investment** – Competitive treatment cost compared to other non-invasive fat destruction methods; typically 35-50% lower consumables cost for coverage of full abdomen.<sup>1</sup>
- **Business development support** – With consumer marketing toolkits and assistance in bringing in patients to your practice.
- **Expanded customer base** – Efficacy that extends to patients with BMI >28 enables non-invasive alternative for liposuction candidates.



## POWER-UP THE Experience

Step up to a new level of ease, control and convenience, with advanced system design, software, and WiFi connectivity.

- **Advanced patient and therapy management** – End-to-end solution for patient tracking, with sophisticated, yet easy-to-use, analysis and reporting tools.
- **Online management and support** – Instant pulse (FTZ) purchasing from the system, automated remote software updates and service, all via WiFi.
- **Ultra-clear visibility and touch control during treatment** – With built-in HD touch screen and video camera.
- **Lightweight, compact device** – Entire system weighs just 45 kg, enabling easy portability.

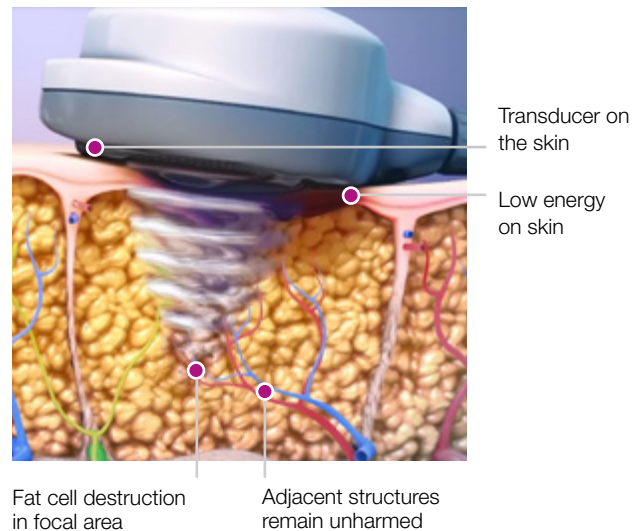


# The Science Behind UltraShape

## Focused, Pulsed Ultrasound

UltraShape's pulsed delivery of focused ultrasound energy causes immediate fat tissue destruction, enabling noticeable and long-lasting results.

- **Focused** – Ultrasound energy converges into a precisely confined focal volume, targeting only subcutaneous fat at a controlled depth.
- **Pulsed** – Energy is delivered in bursts, resulting in a non-thermal mechanical effect that targets only fat tissue. Nerves, blood vessels and muscles remain intact.



## Natural Fat Clearance

Post-UltraShape treatment, triglycerides and debris from the destroyed fat cells are processed by the body's natural physiological and metabolic pathways – the same pathways that handle fat during weight loss.<sup>5</sup> Results of published multi-center controlled clinical trials show that the released triglycerides do not accumulate to a clinically significant extent in the blood or liver.<sup>6</sup>

## Flexible Ultrasound Delivery



### VDF Transducer

Treat large body areas (abdomen, thighs, flanks) at multiple depths in the fat layer, all in a single session.

- Single-focus ultrasound – Targets fat 15 cm under the skin.
- Multi-focus ultrasound – Targets multiple layers of the subcutaneous fat.



### U-Sculpt Transducer

Shape small pockets of fat.

- High-power, single-focus ultrasound – Treat small fat pockets such as upper or lower abdomen, flanks, and outer thighs, with 20% higher power than previously available.
- Lightweight, with advanced ergonomics.

**Advanced protocols:** double-pass treatment mode for greater fat destruction volume and superior efficacy.

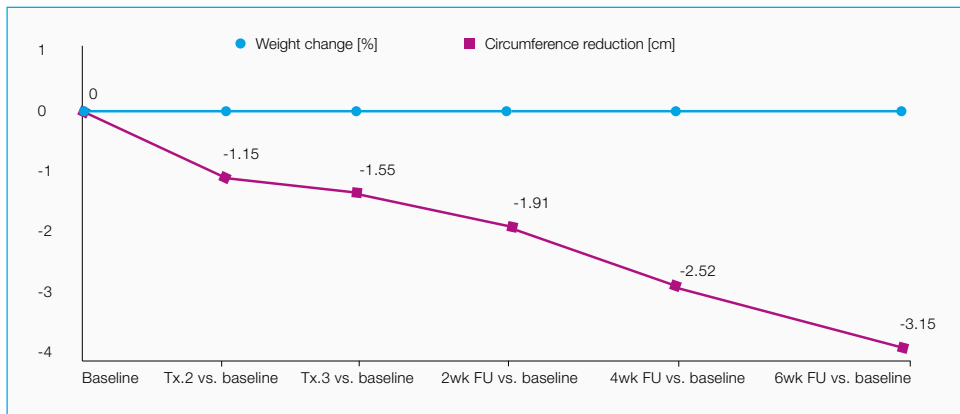
<sup>5</sup> Body Contouring by Non-Invasive Transdermal Focused Ultrasound. J. Moreno-Moraga et al. Lasers in Surgery and Medicine. 2007

<sup>6</sup> Non-invasive Body Contouring by Focused Ultrasound: Safety and Efficacy of the Contour I Device in a Multi-Center, Controlled, Clinical Study Teitelbaum, Steven A. et al. Plastic and Reconstructive Surgery. September, 2007

# Proven Clinical Results

## Results from Recent Clinical Trials of UltraShape Power Showed:

- 20% average fat layer reduction after 3 sessions.
- 3.15 cm average abdominal circumference reduction after 3 sessions.
- High response rate: 83% of patients achieved at least 1.5 cm circumference reduction.



Before and after 3 sessions of UltraShape Power



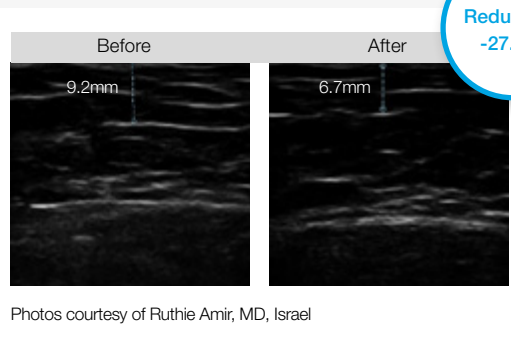
Before and after 3 sessions of UltraShape



Before and after UltraShape and VelaShape III Combined Protocol



Fat layer measurement by ultrasound Before and after 3 sessions of UltraShape Power



Reduction:  
-27.2%



## Expand Your Capabilities with the Shape Family

UltraShape Power is part of the Syneron Candela Shape family – the most comprehensive portfolio of body shaping solutions available today. Offering a variety of technologies and protocols, the Shape family also opens opportunities to customize and combine complementary treatments to boost results. With the Shape family, you can address the broadest range of patients, issues and body areas, at varied price points, and generate a constant stream of recurring revenues.

### The Shape family offering includes:

 for comfortable and customized fat destruction		 With New Guided Mode to enhance and maintain results in body contouring, cellulite improvement and skin tightening.	
---	---	--	---



System Specifications	
Dimensions	110 x 38 x 45 cm / 43 x 15 x 18 in (HxWxD)
System weight	45 kg / 99 lb
Acoustic pressure	Up to 12 g, 660 W/cm <sup>2</sup>
Frequency	~200 kHz
Video camera	HD digital
Screen	15" - capacitive

Syneron Candela is a leading global aesthetic device company with a comprehensive product portfolio and a global distribution footprint.

The Company's technology enables physicians to provide advanced solutions for a broad range of medical-aesthetic applications including body contouring, hair removal, wrinkle reduction, tattoo removal, improving the skin's appearance through the treatment of superficial benign vascular and pigmented lesions, and the treatment of acne, leg veins and cellulite.

The Company sells its products under three distinct brands, Syneron, Candela and CoolTouch, and has a wide portfolio of trusted, leading products, including UltraShape, VelaShape, GentleLase, VBeam Perfecta, PicoWay, Profound and elos Plus.

Founded in 2000, the company markets, services and supports its products in 86 countries. It has offices in North America, France, Germany, Italy, Portugal, Spain, UK, Australia, China, Japan, and Hong Kong, and distributors worldwide.

For additional information, please visit [www.syneron-candela.com](http://www.syneron-candela.com).

  
[www.syneron-candela.com](http://www.syneron-candela.com)